

**RELAÇÃO DO AÇO**

ACO	N	DIAM (mm)	QUANT	C.UNIT (cm)	C.TOTAL (cm)
CA60	1	5.0	90	75	6750
CA50	2	5.0	36	62	2232
CA50	3	10.0	12	307	3684
CA50	4	10.0	12	151	1812

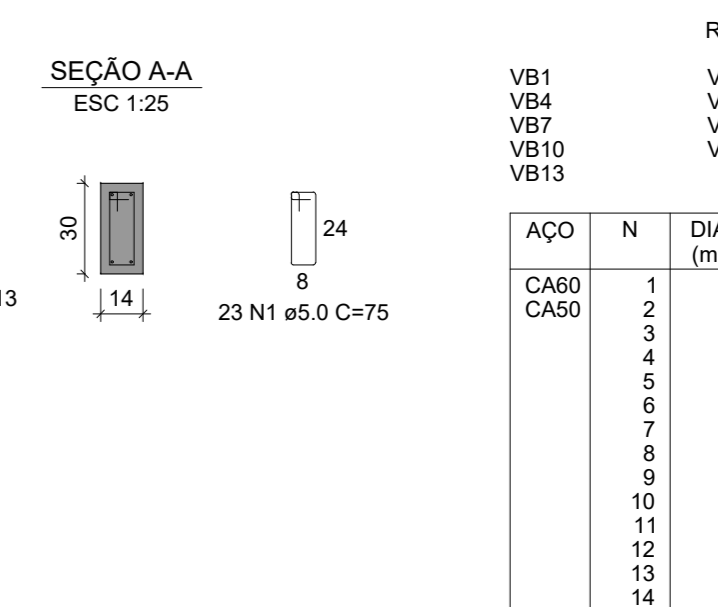
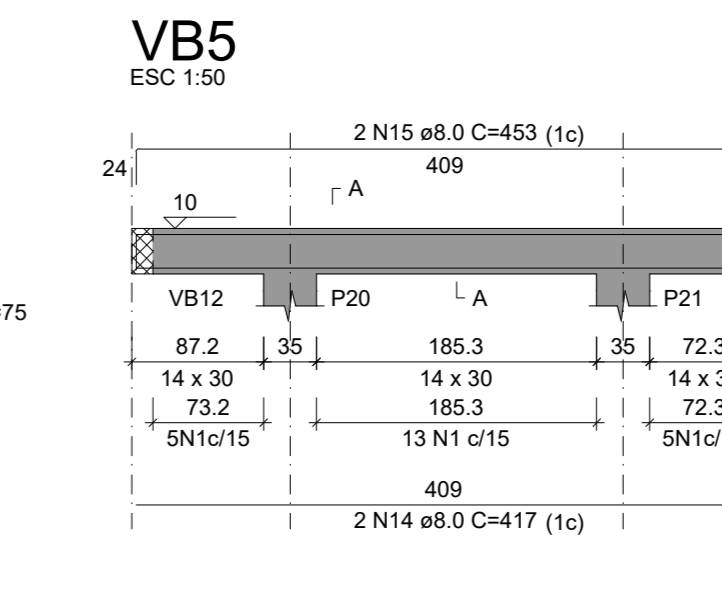
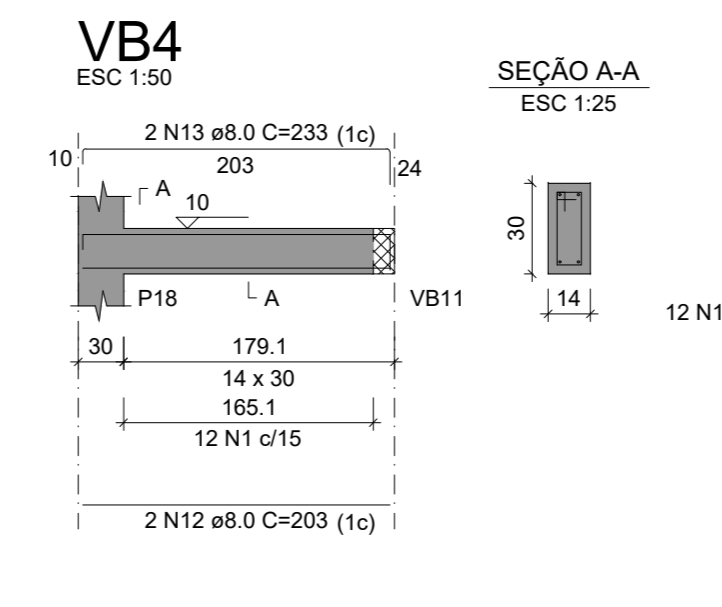
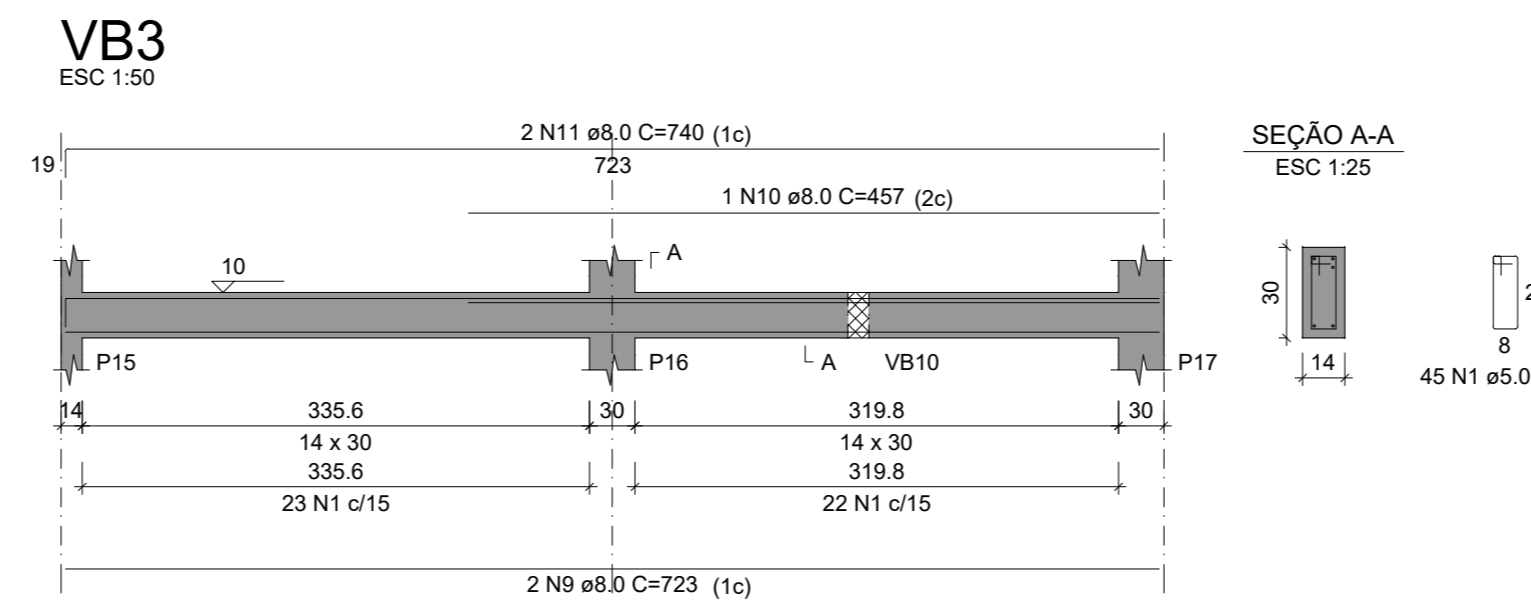
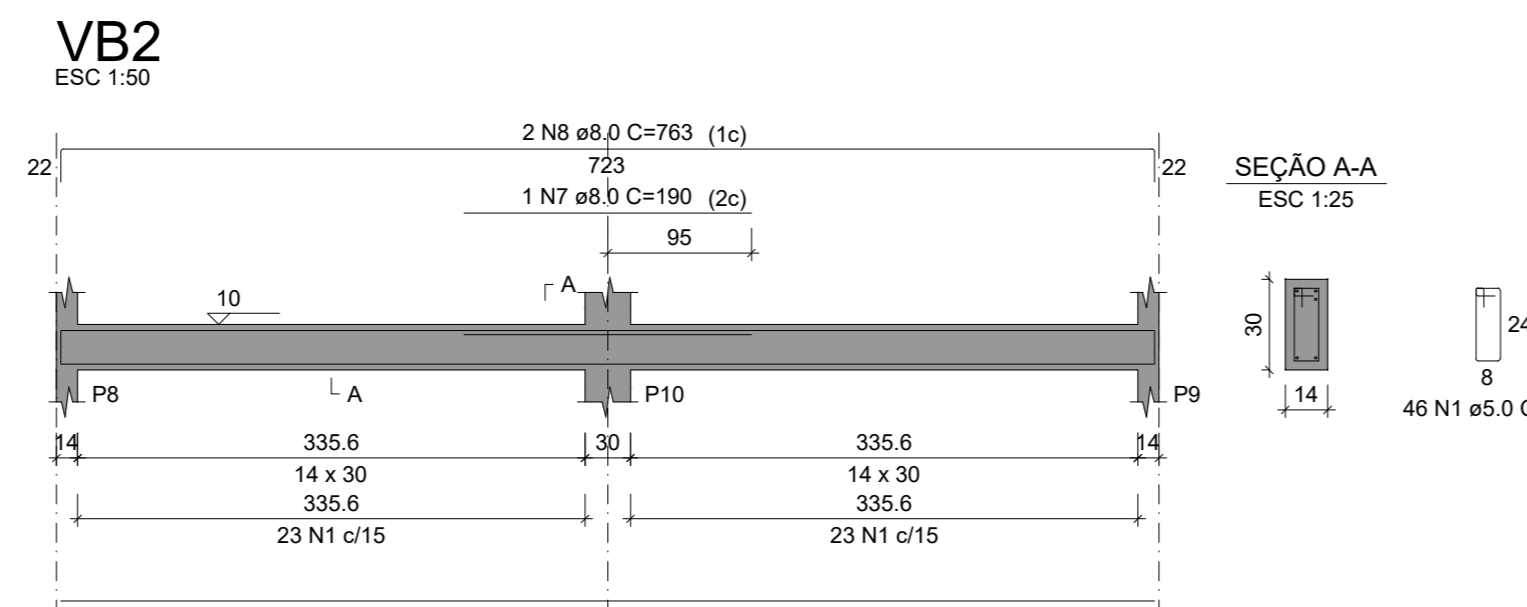
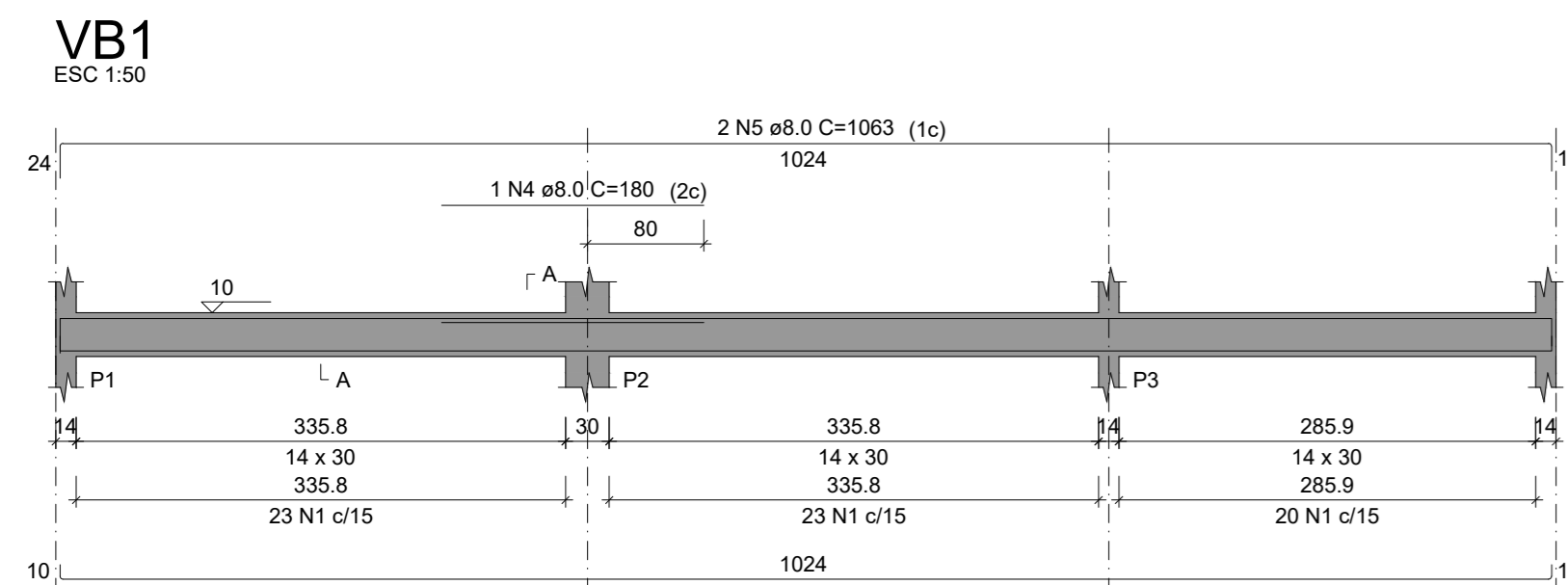
**RESUMO DO AÇO**

ACO	DIAM (mm)	C.TOTAL (cm)	PESO + 10% (kg)
CA50	10.0	55	37.3
CA60	5.0	86.2	14.6

PESO TOTAL (kg): 51.9

CA50: 37.3  
CA60: 14.6

Volume de concreto (C-25) = 0.48 m³  
Área de forma = 10.03 m²



**RELAÇÃO DO AÇO**

ACO	N	DIAM (mm)	QUANT	C.UNIT (cm)	C.TOTAL (cm)
CA60	1	5.0	773	75	57975
CA60	2	6.3	8	876	7008
CA60	3	5.0	2	1040	2080
CA60	4	8.0	1	180	180
CA60	5	5.0	2	1003	2006
CA60	6	8.0	2	723	1446
CA60	7	8.0	2	180	360
CA60	8	8.0	2	763	1526
CA60	9	8.0	2	723	1446
CA60	10	8.0	1	457	457
CA60	11	8.0	2	740	1480
CA60	12	8.0	2	203	406
CA60	13	8.0	2	233	466
CA60	14	8.0	2	417	834
CA60	15	8.0	4	453	1812
CA60	16	8.0	2	724	1448
CA60	17	8.0	2	165	330
CA60	18	8.0	2	761	1522
CA60	19	8.0	2	425	850
CA60	20	8.0	2	1032	2064
CA60	21	8.0	2	1041	2082
CA60	22	8.0	8	1072	8576
CA60	23	8.0	1	155	155
CA60	24	8.0	4	1198	4792
CA60	25	8.0	2	1029	2058
CA60	26	8.0	2	181	362
CA60	27	8.0	2	212	424
CA60	28	8.0	1	170	170
CA60	29	8.0	1	175	175
CA60	30	8.0	2	1034	2068
CA60	31	8.0	2	875	1750
CA60	32	8.0	2	853	1706
CA60	33	8.0	2	453	906
CA60	34	8.0	2	1200	2400
CA60	35	8.0	2	984	1968
CA60	36	8.0	4	257	1028

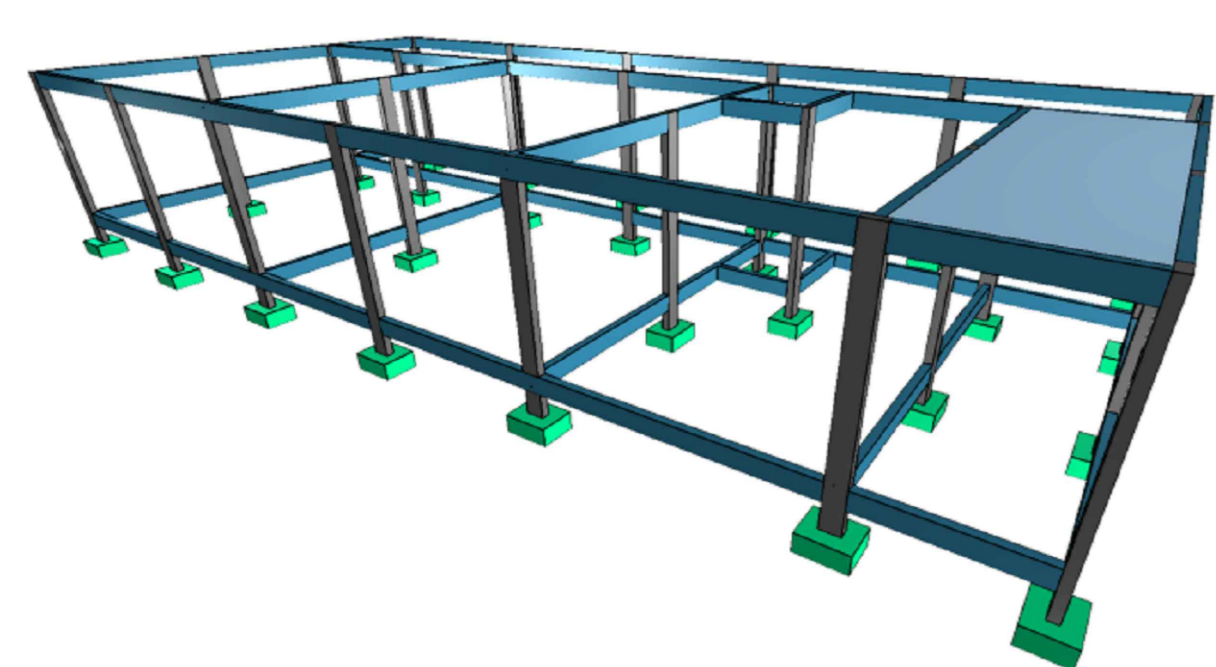
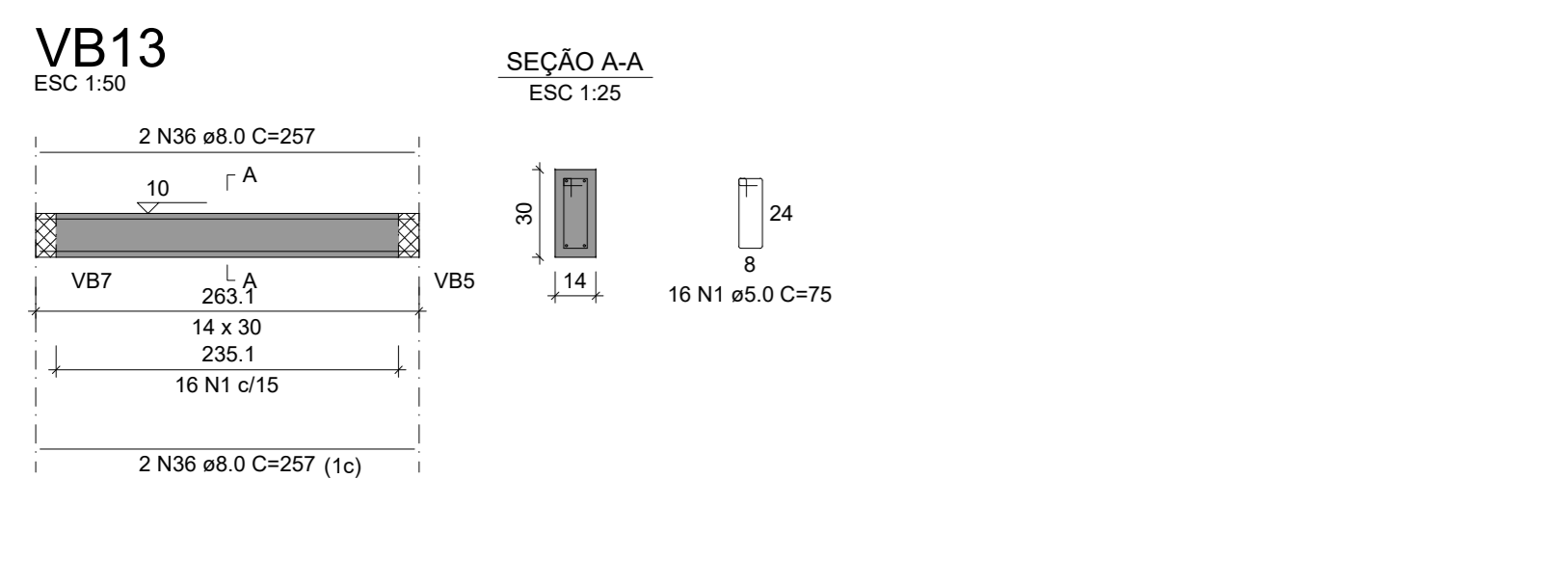
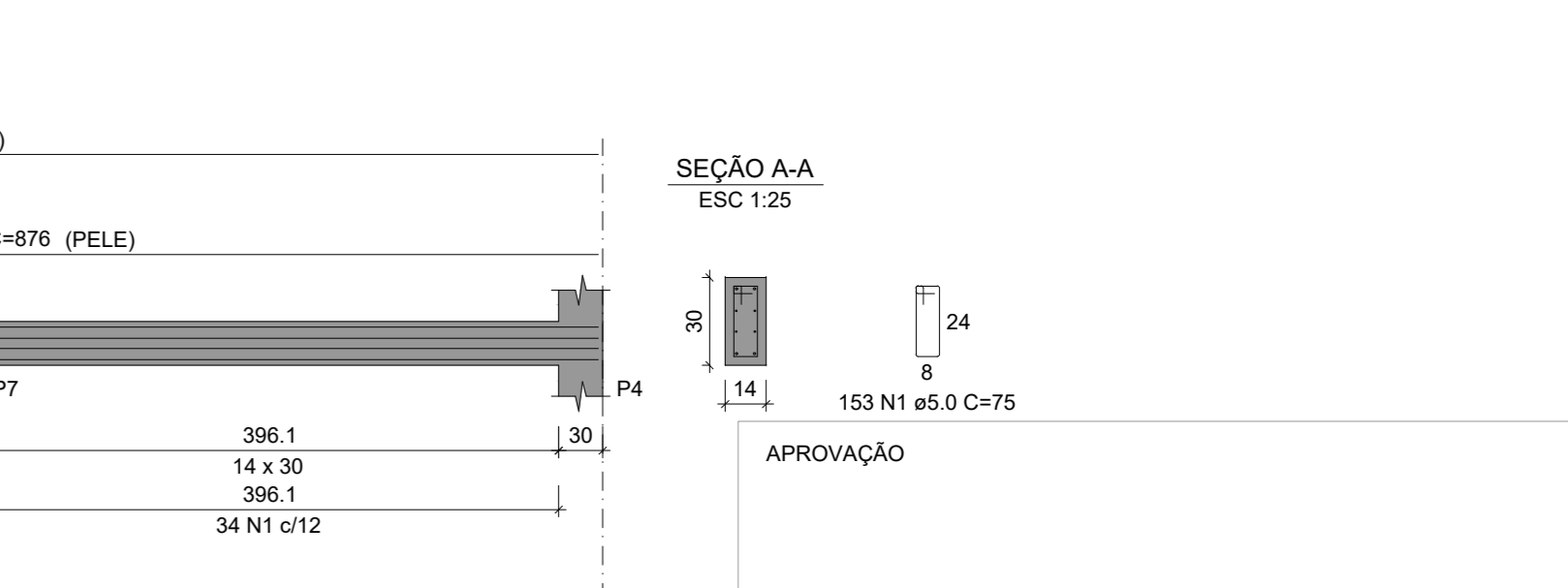
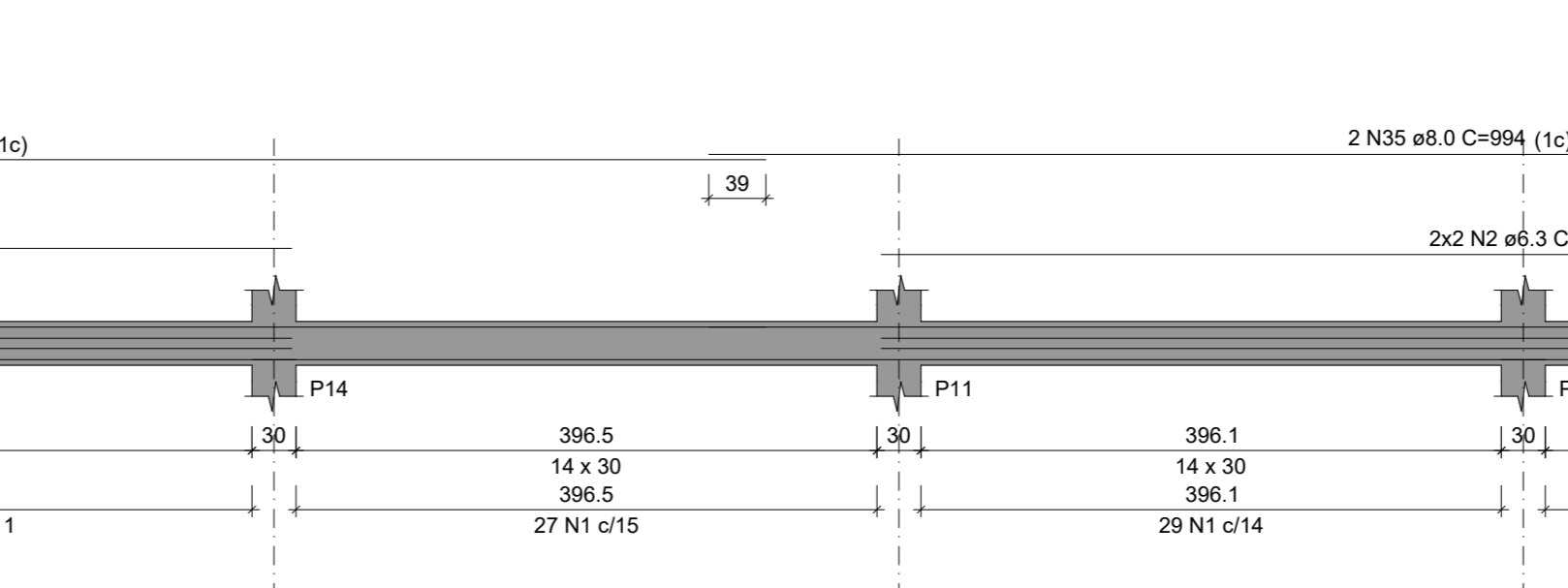
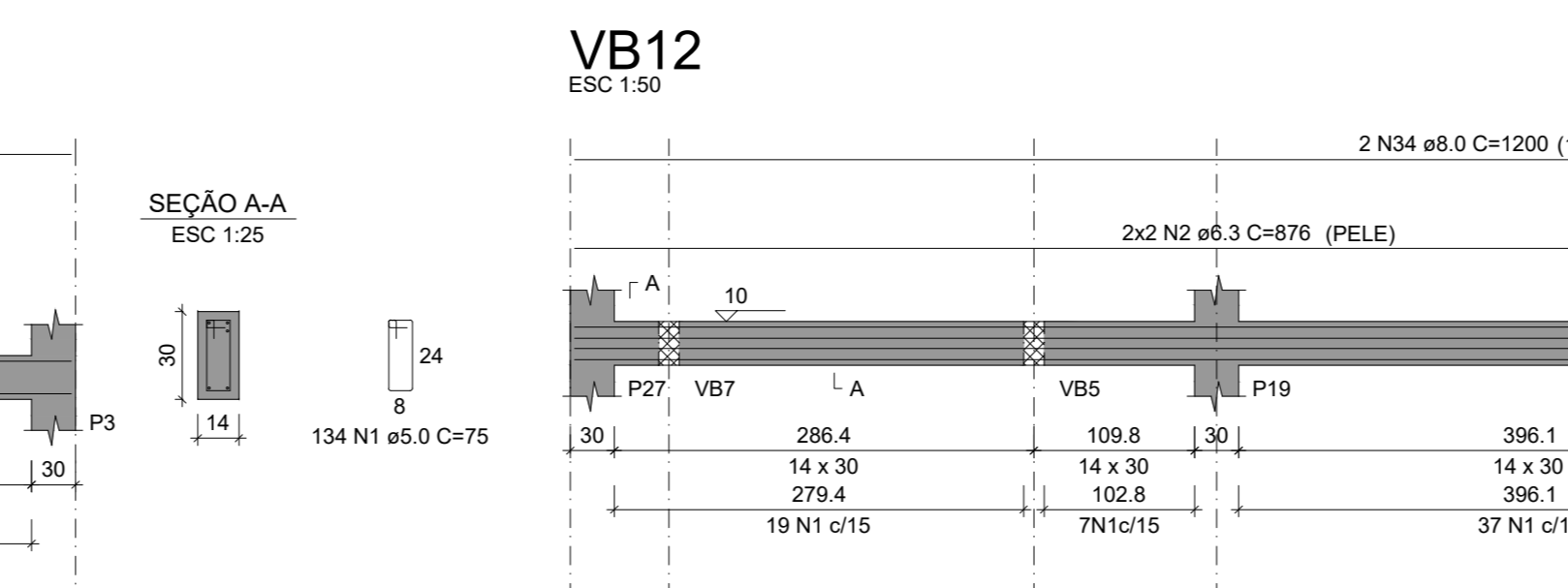
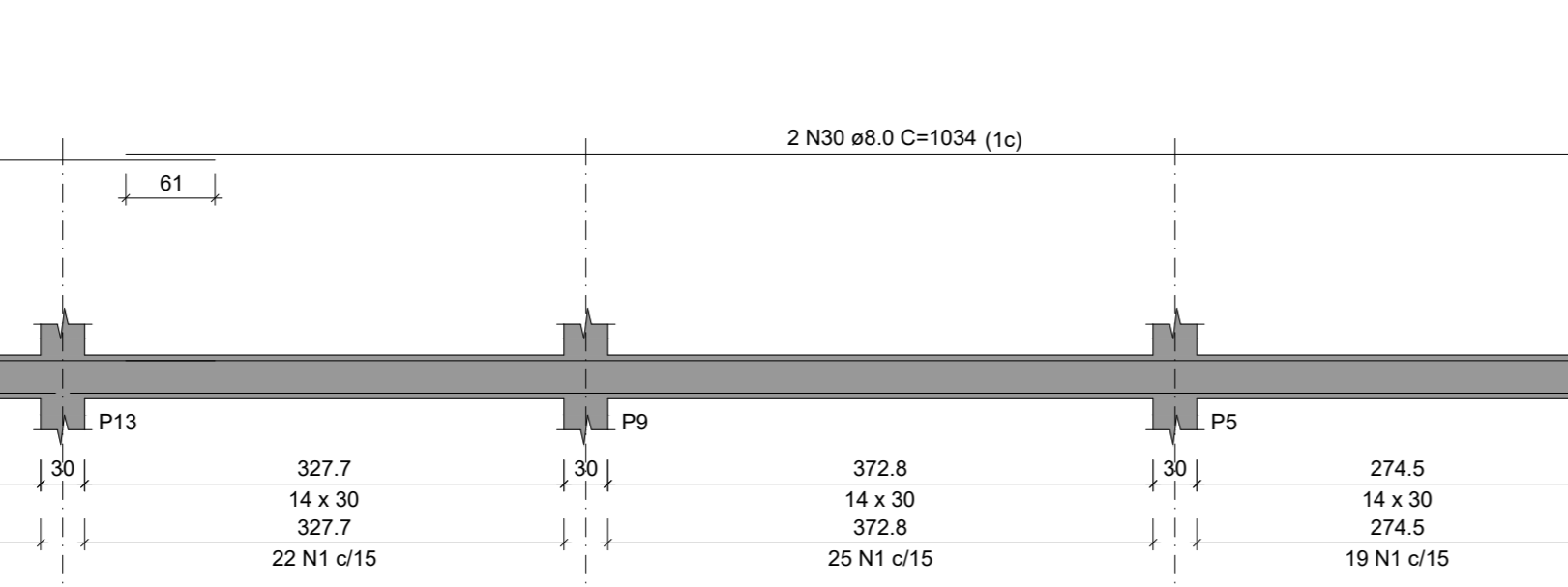
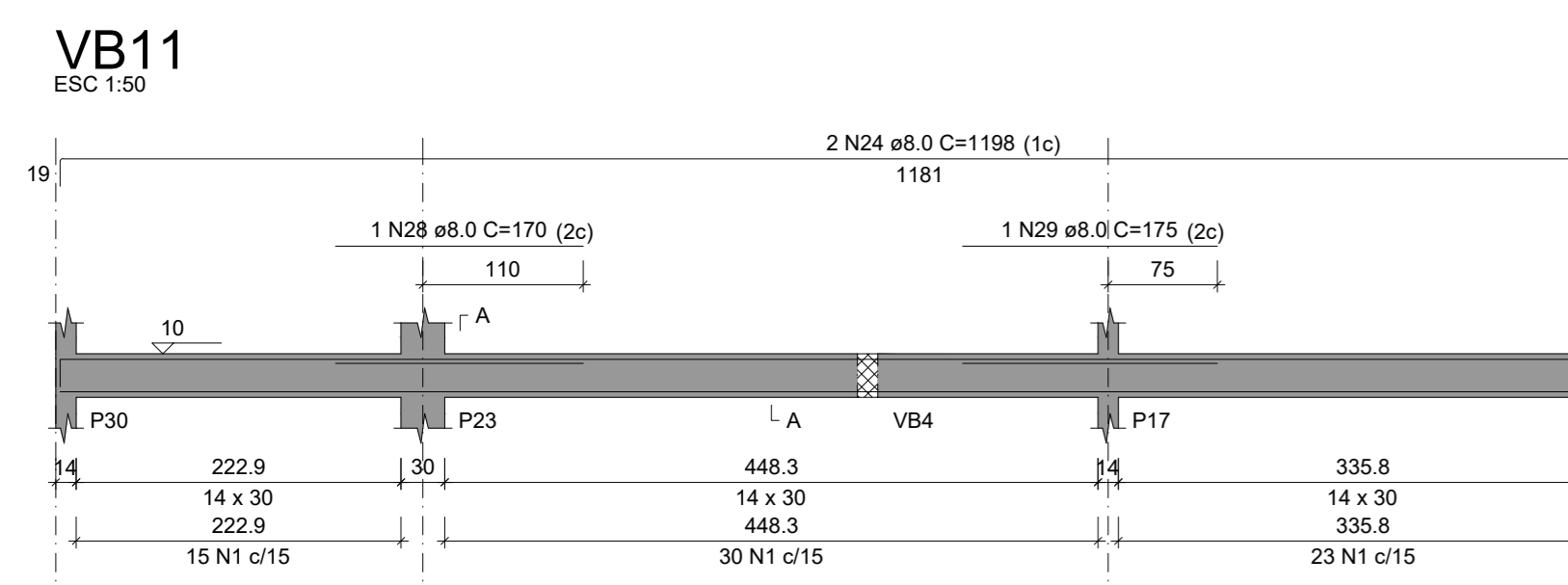
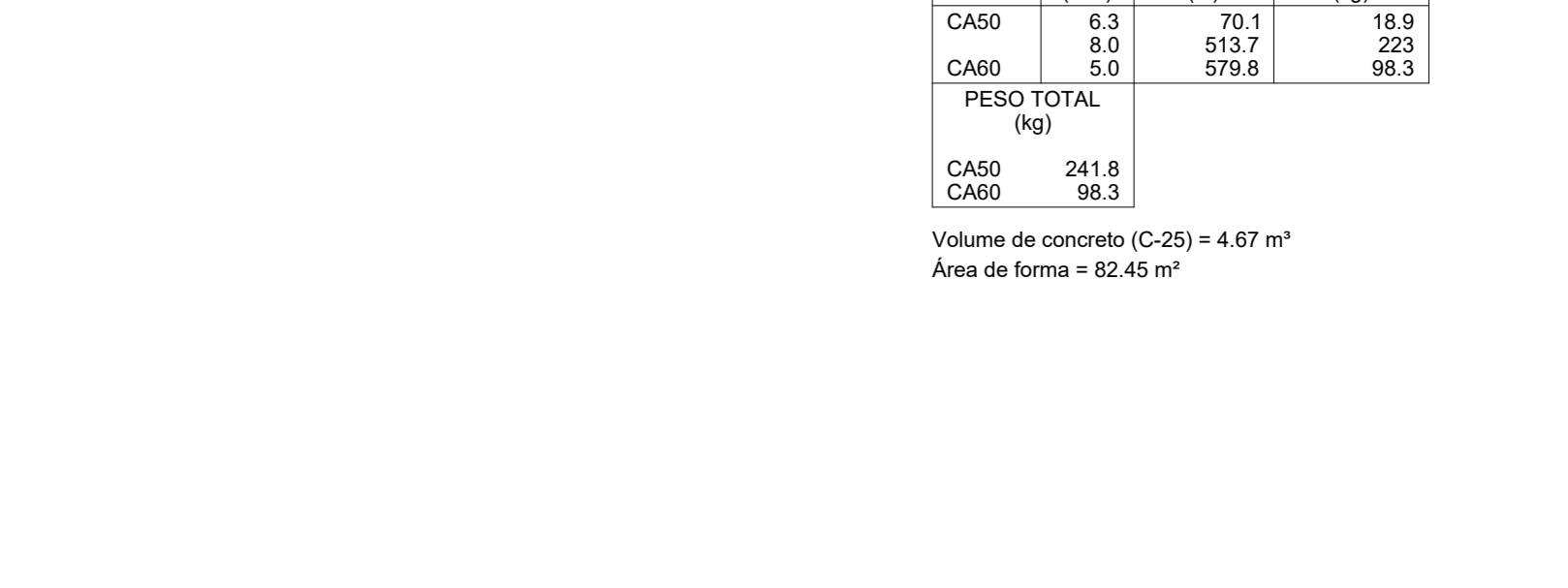
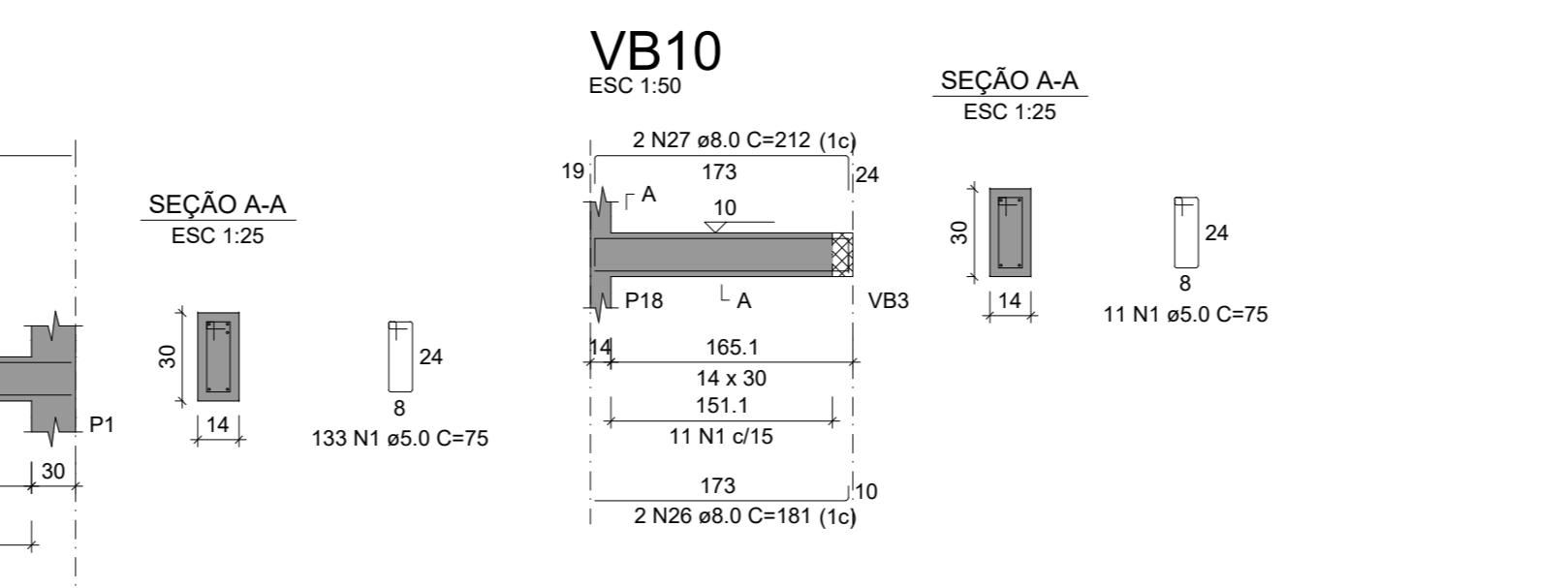
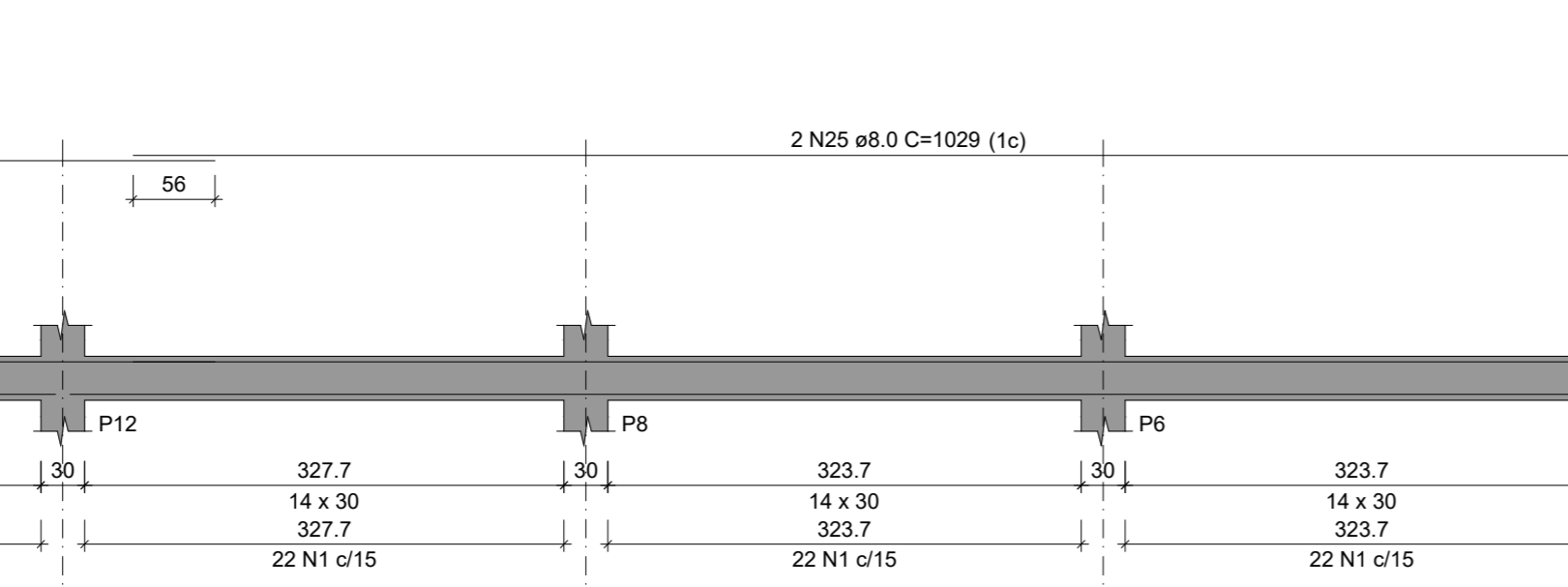
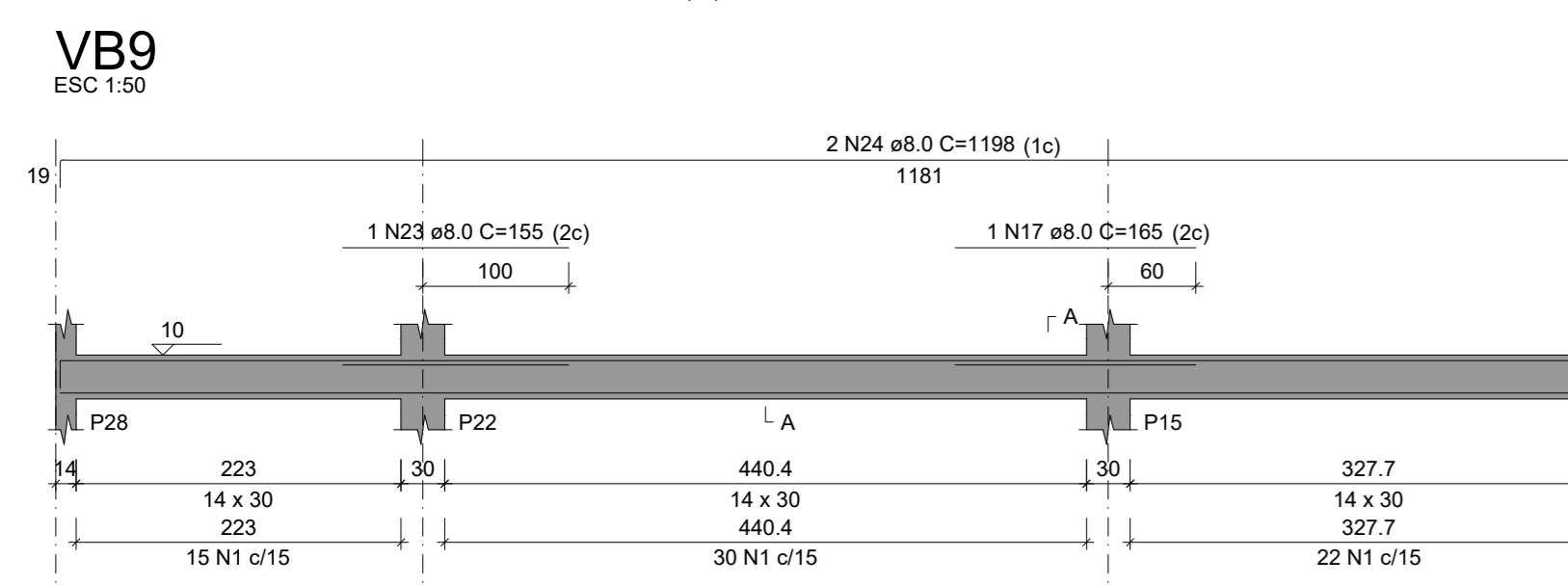
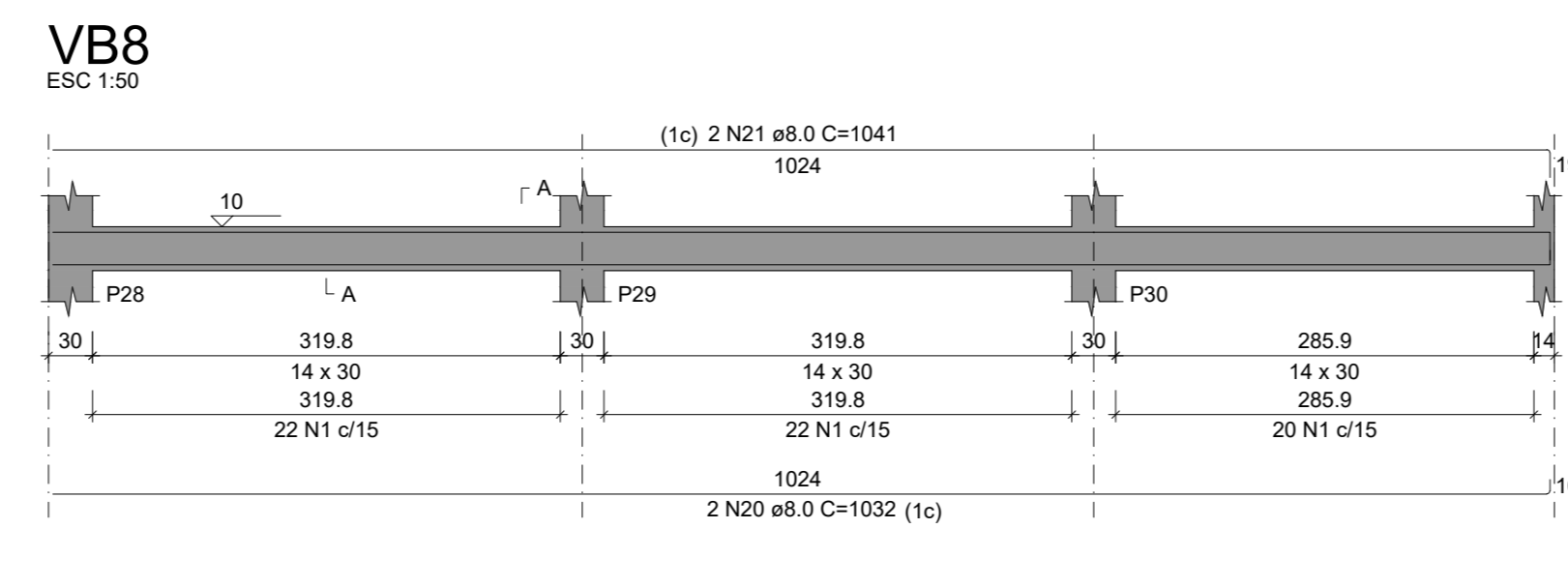
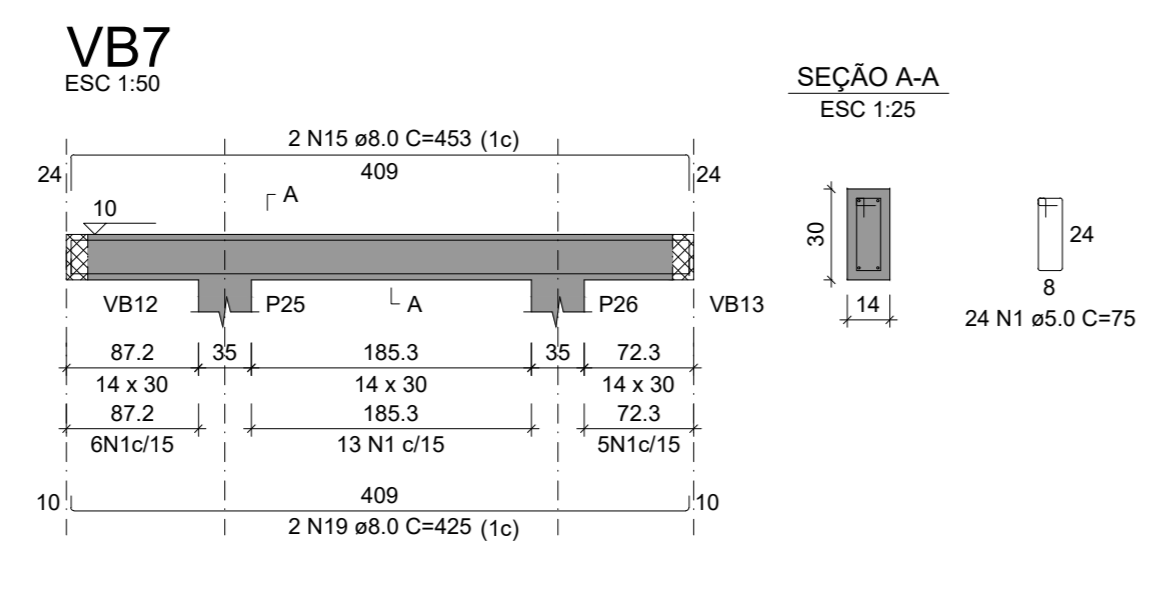
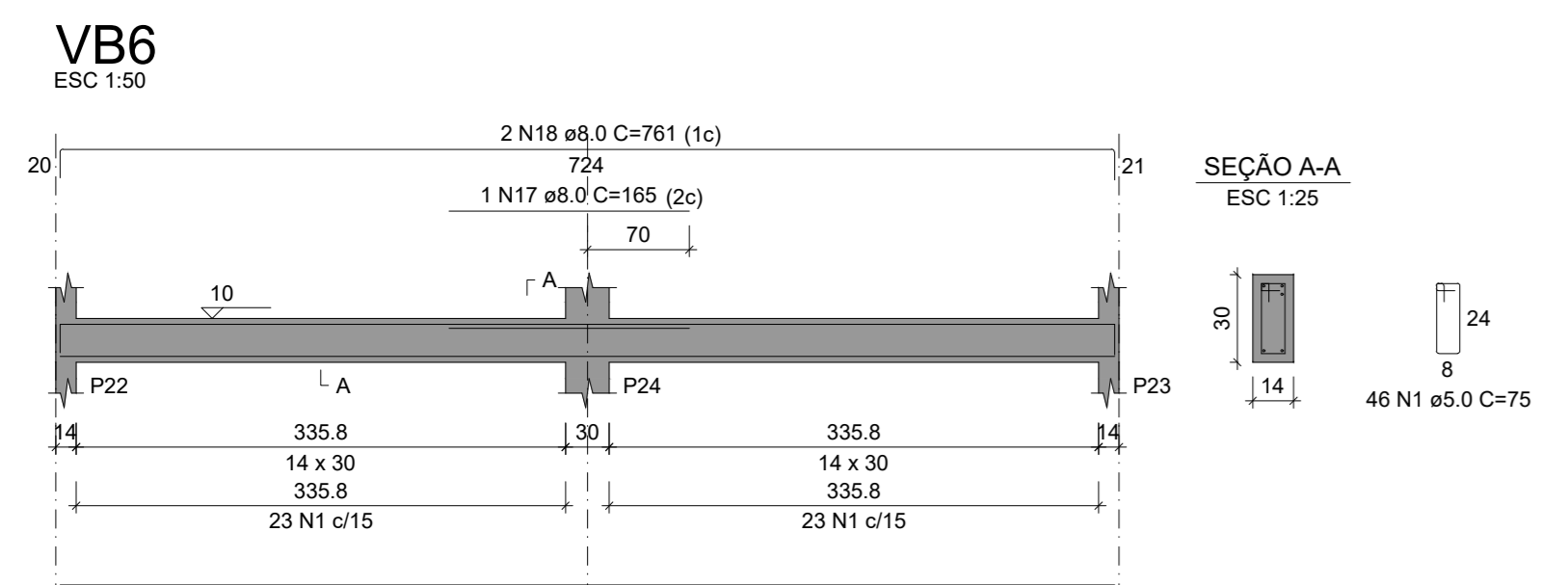
**RESUMO DO AÇO**

ACO	DIAM (mm)	C.TOTAL (cm)	PESO + 10% (kg)
CA50	6.3	70.1	13.9
CA60	8.0	613.7	223
CA60	5.0	579.8	98.3

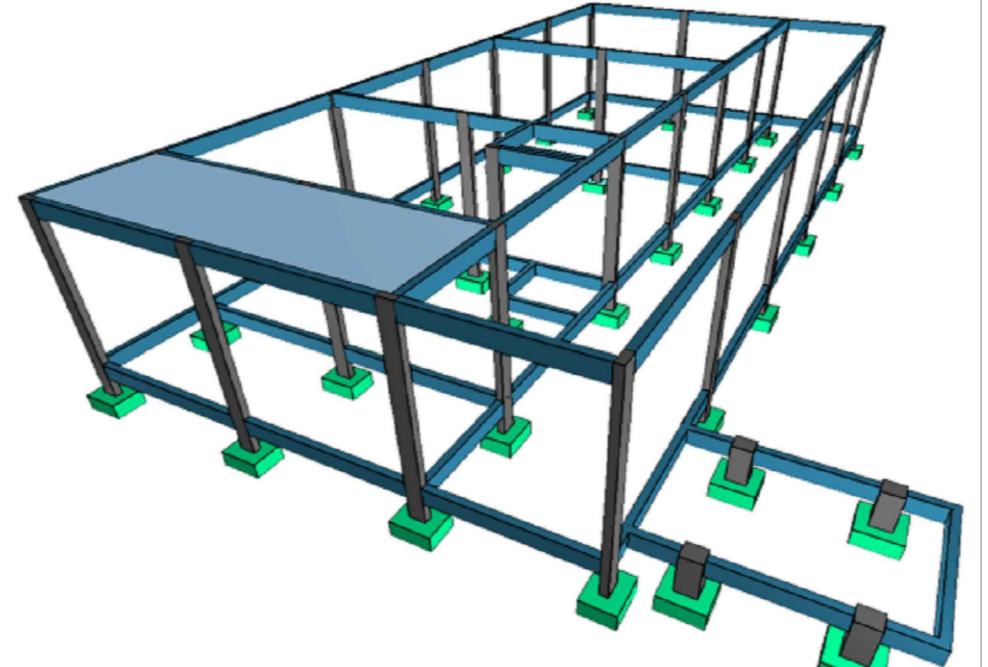
PESO TOTAL (kg): 241.8

CA50: 241.8  
CA60: 98.3

Volume de concreto (C-25) = 4.67 m³  
Área de forma = 82.45 m²



Perspectiva 3D sem escala



Perspectiva 3D com escala

## ESTRUTURAL - REFORMA E AMPLIAÇÃO

ENDEREÇO: AV. RIO TOCANTINS, CENTRO DE TALISMA-TO ESCOLA MUNICIPAL PROFESSORA ANTONIA DOS REIS RODRIGUES BATISTA

PROPRIETÁRIO: PREFEITURA MUNICIPAL DE TALISMA - TOCANTINS CNPJ - 01.612.630/0001-05

AUTOR DO PROJETO: ENG. CIVIL JEFFERSON JAIME CASSOLI CREA - 109612/N-TO

RESPONSÁVEL TÉCNICO: JEFFERSON JAIME CASSOLI CREA - 109612/N-TO

TERREÇO	TERREÇO
TERREÇO: 1.886,77 m²	TERREÇO: 1.886,77 m²
ÁREA CONSTRUIDA: 862,29 m²	ÁREA CONSTRUIDA: 862,29 m²
ÁREA A CONSTRUIR: 233,24 m²	ÁREA A CONSTRUIR: 233,24 m²
ÁREA TOTAL CONSTRUIDA: 1095,53 m²	ÁREA TOTAL CONSTRUIDA: 1095,53 m²